

# Wantage Community Hospital Public Engagement context

October 2023



Buckinghamshire, Oxfordshire  
and Berkshire West  
Integrated Care Board



Oxford Health  
NHS Foundation Trust

*With input from wider partners and stakeholders*

# Summary of the process we're following



# NHS England

## Principles for engagement

Working in partnership with people and communities:  
Statutory guidance

<https://www.england.nhs.uk/long-read/working-in-partnership-with-people-and-communities-statutory-guidance/>

## Oxfordshire Improvement Programme Community Services engagement and design principles

[https://mycouncil.oxfordshire.gov.uk/documents/s58748/HWB\\_DEC1621R10%20-%20Community%20Strategy%20Principles.pdf](https://mycouncil.oxfordshire.gov.uk/documents/s58748/HWB_DEC1621R10%20-%20Community%20Strategy%20Principles.pdf)



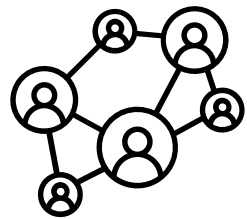
# Acknowledging the history



- Since 2016 the inpatient beds have been temporarily closed.
- The local community were previously asked for views about Wantage Community Hospital in what was called the "OX12 Project" between 2017-19 however this concluded without a decision and widespread community dissatisfaction.
- In 2020-21 all the old pipework was replaced, and this enabled the hospital building to reopen fully. A trial of a number of different outpatient (clinic based tests, treatment and therapy) have been running downstairs with maternity upstairs.
- The NHS has recently reopened dialogue through the Oxfordshire Health Overview and Scrutiny Committee (HOSC) and the local Wantage Health Sub-committee of the Town Council to co-design what hospital type services would best be provided from Wantage Community Hospital ([A \(oxfordshire.gov.uk\)](https://www.oxfordshire.gov.uk))

# Where are we now?

Oxfordshire Joint Health Overview & Scrutiny Committee



*Wantage and Grove previously engaged community*

- Wantage community hospital inpatient beds have now been temporarily closed for over 7 years
- The hospital is **currently used to provide a range of outpatient services (tests, treatment, therapy, follow ups)** for the local community, some have been running for some time and others as a pilot for the last 18 months after the space previously used as an inpatient ward was re-opened.
- We have been starting to **co-design** what future type of services could be provided from the hospital and **now want to seek broader views upon to help shape final proposals**
- Oxford Health and its NHS partners, have **no plans to close Wantage Community Hospital**. We are committed to keeping it open but we need your input to help inform the types of services to be provided from the building that are sustainable and best meet the needs of the local community.

# Where do we want to be?

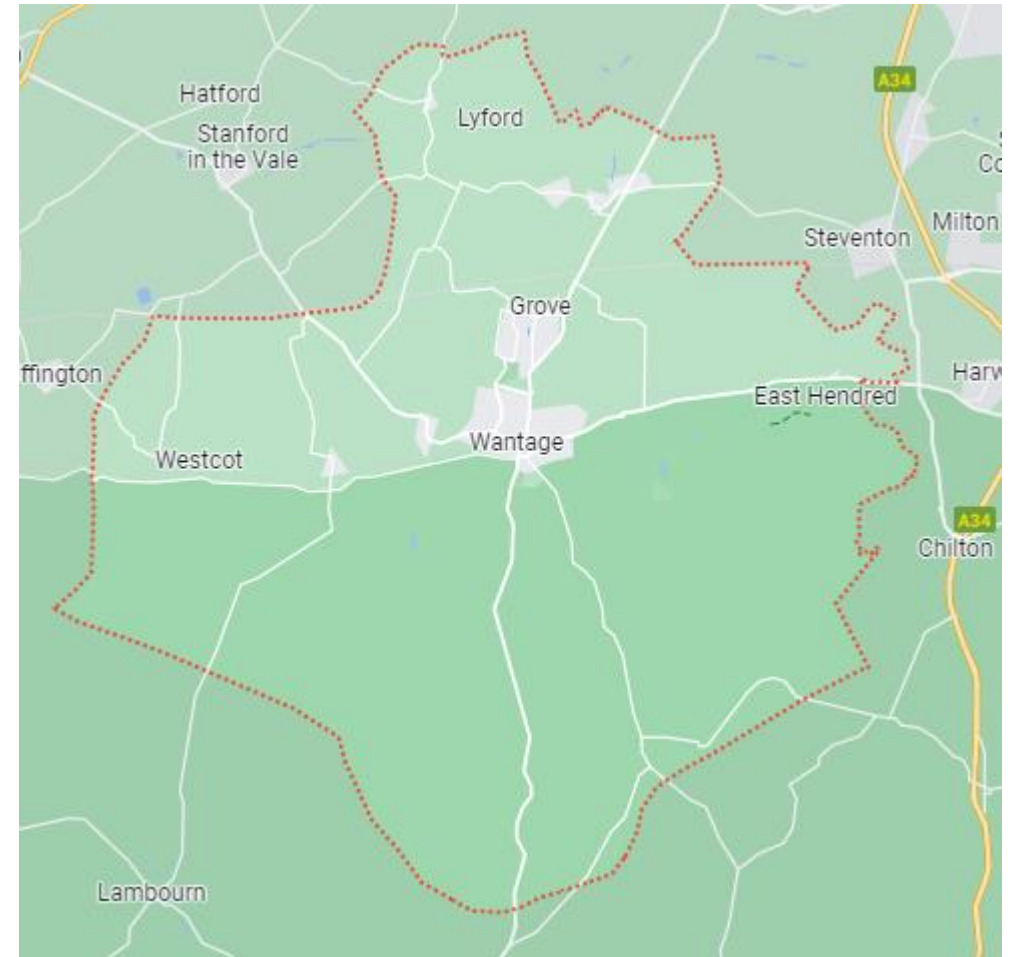
**Our objective** is to provide sustainable hospital-like services from Wantage Community Hospital for the longer term to meet the needs of the local population now and in the future that maximises use of the available space.



- Through our co-design process we have also identified **there may be needs for other types of healthcare provision in other buildings/ parts of the community to complement effective healthcare pathways.** We are keen to hear your views on where these links are.
- We are **not proposing any changes to the maternity services** and support their continuation – located upstairs in Wantage Community Hospital.

# What do we know about the Wantage & Grove population?

- **The population is growing**, particularly within the Grove area
  - In 2022, there were 33,179 patients registered with Wantage GP practices
  - This is due to increase to around 41,000 by 2030 (based on housing growth trajectory)
- **The population is ageing**, and more people are forecast to live longer
- More people both young and old are living with **more complex needs**



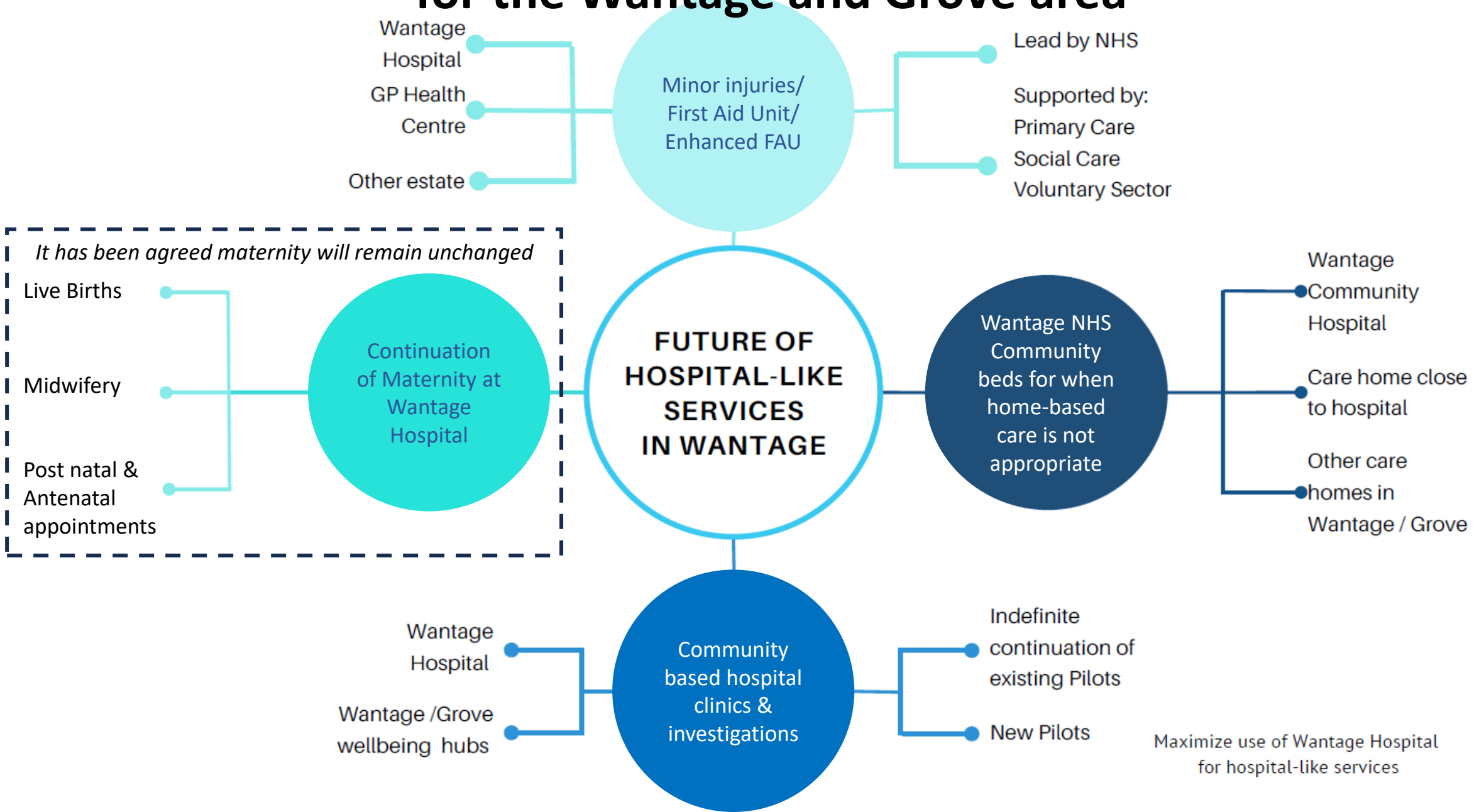
# How can we best use the space in Wantage Community Hospital to benefit the health and wellbeing of the local community?

We have focused on three areas which we will explore today:

- i. Clinic based services (tests, treatment and therapy) for planned care appointments
- ii. Community inpatient beds and the alternatives when care in your own home isn't possible
- iii. Urgent care (minor injury, illness and mental health issues) access needs on the same day



# Co-produced summary of community needs for hospital-like services for the Wantage and Grove area



# Scenario 1: Clinic based services (tests, treatment and therapy) for planned care appointments

Planned care services would take up the whole of the ground floor with scope for some more services to come in to maximise the available space



← Maternity (no change)  
← Planned care services

### What this would mean:

- More planned care services could be provided within Wantage
- Hospital beds and urgent care services would need to continue to be accessed at other hospital and local care home sites

If Wantage Community Hospital didn't provide these planned care services, where else could this type of service be accessed?



John Radcliffe or Churchill hospital in Oxford



Great Western in Swindon



Oxford City clinic bases e.g. East Oxford Health Centre or The Slade



Other Community Hospitals for some mental health issues and children's therapy services

# Scenario 1: Clinic based services (tests, treatment and therapy) for planned care appointments

## What happens currently

- When someone **needs a hospital service but doesn't need to stay overnight** (inpatients) they can visit a specialist in a clinic (often called planned care or outpatients)
- Currently, the clinic-based service most needed by residents from the Wantage and Grove area is **Ophthalmology** (specialist eye appointments)
- From the most recent data, **1,445 patients** came to an outpatient clinic as part of the pilot services being provided on the ground floor of Wantage Community Hospital. Most of these patients were seen by Ophthalmology and they mainly (57%) came from an OX12 postcode.
- On average **120 people per month** come to Wantage Community Hospital to access the range of clinic-services currently provided

# Scenario 1: Clinic based services (tests, treatment and therapy) for planned care appointments

## What happens currently

Since November 2021, the following outpatient services have been piloted within Wantage Community Hospital:

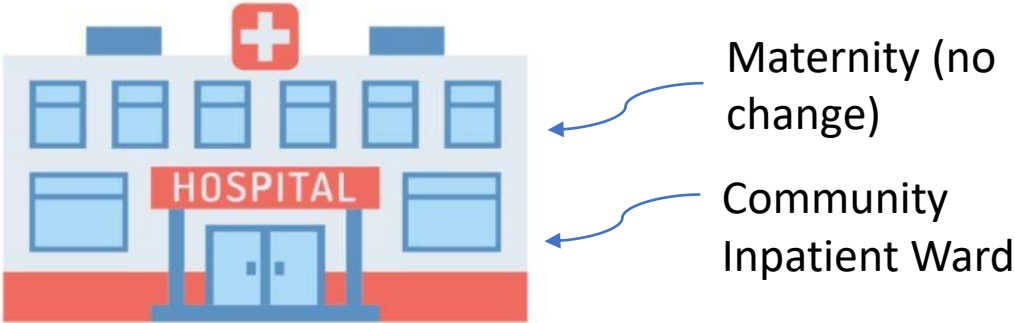
- Ophthalmology, including intravitreal (eye) injections
- Audiology & Ear, Nose & Throat (ENT)
- Mental health services (Adult mental health, psychological therapies Oxfordshire Talking Therapies, neuro-developmental)
- Learning disabilities
- Diabetes screening
- Health visiting clinics including group sessions
- GP clinics
- Expansion of MSK/physiotherapy by Connect Health
- Health Share providing ultrasound clinics

In addition, the following existing clinic-based services are provided within the community hospital:

- Podiatry
- Adult & children's speech and language therapy
- Children's Integrated Services
- MSK/Physiotherapy
- School Nursing Team
- Maternity Unit (upstairs)

# Scenario 2: Community inpatient beds and the alternatives when care in your own home isn't possible

The inpatient ward is likely to need the whole of the ground floor (around 20 beds).



### What this would mean:

- If Community hospital beds were provided in Wantage there would be no space for any outpatient (tests, treatment and therapy) services or potential urgent care type service. Wantage and Grove residents would need to access these at other hospital and health and care locations
- Community inpatient provision across the rest of the county would require a review to accommodate this new ward.

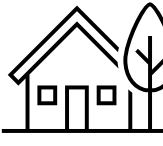
**If Wantage Community Hospital didn't have any beds how would this type of healthcare be provided to the local population?**



Health and care in your own home



Other community hospitals



Short stay hub beds in care homes



End of life and palliative care



As required, winter/surge beds in care homes

# Scenario 2: Community inpatient beds and the alternatives when care in your own home isn't appropriate

## What happens currently – inpatient beds

### i) Community Hospitals

- Each month around **5 people from the Wantage and Grove area are admitted** to a community inpatient bed. Despite the ageing population we don't anticipate this changing because of our growing number of alternative health and care pathways to avoid hospital admissions.
- **Most from the Wantage and Grove area (55%) currently go to either Abingdon (10 miles from Wantage) or Didcot (8 miles from Wantage) community hospital.** Of those that don't go to these hospitals (45%) the **median distance travel from Wantage is 20 miles** to other community hospitals. The average (median) length of stay in a community hospital bed is around 34 days.

### ii) Short Stay Hub Beds

Each month, around 2 people from the Wantage and Grove area require less intensive rehabilitation and are **admitted to care homes (mainly to The Close in Burcot, 15 miles from Wantage) where a wrap around package** of therapy, primary care, nursing and social care in-reach is provided. Average stay is relatively short at **14 to 21 days** at which point the individual is then discharged to their long term place of residence.

### iii) Winter/ surge beds

The healthcare system currently has no plans to purchase any for 23/24 but If required will go to the care market to ascertain what could be made available for short periods of stay, typically 1 – 2 weeks for a few months.

### iv) Palliative and end of life care (outside of the individual's home)

Most people wish to receive a package of care to pass away in their own home, but sometimes alternatives are needed, particularly at times of crisis. We are currently working with local teams to explore how we can further develop local services.

# Scenario 2: Community inpatient beds and the alternatives when care in your own home isn't appropriate

## What happens currently – Home-based health and care

### **i) Hospital @ Home**

Provide healthcare in your own home and facilitate earlier discharges from hospital. Oxfordshire has both a children and young people's and adults H@H service. Around 45 people from the Wantage and Grove area currently access the service per month with the service continuing to expand over the coming 6 months to provide 40 places per 100,000 population by Apr 24.

### **ii) Urgent Community Response (UCR)**

Help adults, predominately older adults, who are having a health crisis or having difficulties being at home because their main unpaid carer is not able to cope with caring for them. Around 150 people from the Wantage and Grove area access UCR on a monthly basis.

### **iii) Discharge to Assess**

Where people who are clinically optimised and do not require an acute hospital bed, but may still require care services are provided with short term, funded support to be discharged to their own home (where appropriate) or another community setting where a package of care is provided whilst an assessment for longer-term care and support needs is then undertaken. This approach is currently being implemented across Oxfordshire and will be in place in Wantage and Grove over the coming months.

### **iv) Reablement**

Short-term support is provided by a group of specialists across health and care to help someone at home regain independence. This service continues to be in place across Oxfordshire and is available to Wantage and Grove residents.

# Scenario 3: Urgent care (minor injury, illness and mental health issues) access needs on the same day

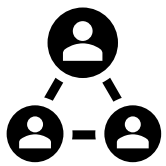
The urgent care type service is likely to need half of the ground floor and the other half could accommodate planned care services



### What this would mean:

- More urgent care could be supported in Wantage
- The range of planned care services (tests, treatment and therapy) currently provided would need to be reduced by around a half
- Hospital beds would need to continue to be accessed at other hospital and community sites

**If Wantage Community Hospital didn't have an urgent care type service where else would this type of service be accessed?**



Potential to explore an integrated model with local NHS and care partners at the Health Centre



Abingdon MIU



24/7 Mental Health line (via 111)



Mental health, social care and community health services and crisis support



# Scenario 3: Urgent care (minor injury, illness and mental health issues) access needs on the same day

## What happens currently

- There are lots of reasons someone might need an appointment on the same day
- **111 provides an initial assessment** and signposting to same day healthcare services, this includes 'option 2' to seek mental support on the same day. In addition, people can also contact their GP (and Out of Hours GP).
- If you have had an accident, you would usually be recommended to go to a **Minor Injuries Unit (MIU) or the Emergency Department (ED)**.
- On average the population of Oxfordshire visits an MIU **once every 7 years**. The most recent data available tell us that the **Wantage & Grove population** made 1361 visits to an MIU over one year, which equates to **an average of 3.7 total visits from this area** to an MIU a day. (164 visits a month to Abingdon MIU).
- When considering forecast population growth and assuming similar demand patterns, the average number of visits from Wantage and Grove area could increase to 4.8 visits a day to an MIU (1745 visits per year).
- Mental health access on the same day is through the 24/7 Mental Health Helpline (via 111)